



POWER TOOLS

iQ252

10" DRY CUT RAIL SAW WITH INTEGRATED DUST CONTROL

The IQ 252 is a 10in/254mm dry-cut rail saw for professional contractors, designed to eliminate problems with cutting wet, save time, and increase your profitability on tile jobs.

With fully integrated dust, collection technology, this innovative tool allows you to cut tile inside or outside with no water and no dust.

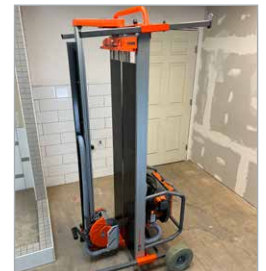


**Cut tile
DRY
inside or
outside.**

SPECS

- 52 inch rip cuts
- 36 inch diagonal cuts
- OSHA compliant

VOLTAGE	120v
TOTAL SYSTEM AMPERAGE	17amps
SAW MOTOR AMPERAGE	1.5hp/12amps
VAC MOTOR AMPERAGE	.8hp/5amps
SAW WEIGHT	175 lbs
BLADE SIZE	Q-Drive 10" Blade
FILTER TYPE	iQ Dura Bond Cartridge
CUTTING DEPTH	1 inch
EFFECTIVE DUST CAPACITY	11 LBS, or over 500 LF
SAW DIMENSIONS	24"W x 68"L x 47"H



PERFORMANCE

Cut, clean, efficient and precise, with no water, no slurry and virtually no heat — even with hard materials.



JOB VERSATILITY

With a 10" blade, full-width table, and 52" cut capacity, the IQ 252 can handle even the trickiest and most technical tile jobs



PORTABILITY

Built on wheels with a large stand, the IQ252 is easy to transport and set up in small spaces with no water source required.